



BATH COMMUNITY PARK

BATH TOWNSHIP



Park Board Meeting
May 15, 2025





Stefanie Smith, RA
Project Manager, Project Lead



Steven Kolarik, PLA
Landscape Architect



Jeremy Ousley, PE
Site/Civil Engineer



Caitlin Russell
Planner and Designer

Additional Team Members

KEY STAFF	ROLE	FIRM
Eleanor Frey	Graphic Design	EDG



Environmental Design Group

Since 1984, we have been making lasting community impacts that improve the well being of people and communities. We stand as a positive force, providing professional planning, design and engineering services to shape, define, utilize, conserve and restore land and water resources. We are the community impact people.

AKRON (HQ) • CLEVELAND • COLUMBUS • MARIETTA • MASON • NEWARK

envdesigngroup.com

125

Employees

Years of
Existence
40

- 20** Professional Engineers
- 5** Professional Landscape Architects
- 1** Registered Architect
- 6** Professional Surveyors
- 4** Planners
- 2** Ecologists
- 2** Environmental Scientists
- 21** Designers
- 7** Survey Crews
- 13** Construction Management Specialists
- 4** Graphic Designers
- 40** Technical & Support Staff

Values

- 

COLLABORATION
- 

TRUST
- 

INTEGRITY
- 

SUSTAINABILITY
- 

QUALITY
- 

FAMILY

Relevant Experience

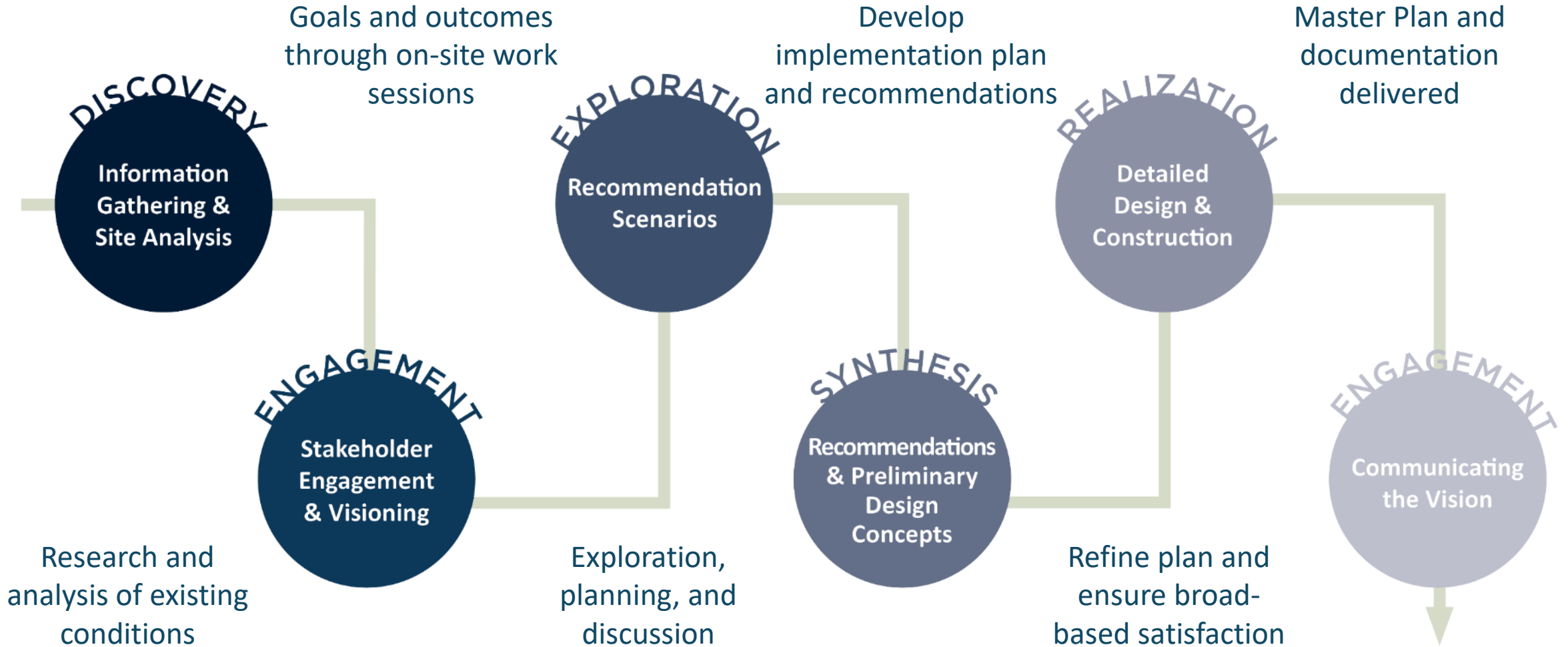


- *Management Tool*
- *Engages Stakeholders/Philanthropists*
- *Provides Organizational Focus*
- *Long Term Plan*
- *Mitigates Risk of Short-Term Planning*
- *Aligns Operations and Service Delivery to Future Needs*
- *Requires Experienced Consultants*
- *Ensures Program Drives Architectural Planning*

**realistic • intentional • comprehensive
achievable • living document**



STRATEGIC APPROACH



MASTER PLAN TIMELINE

October 24 Pre-Interview Site Walk

November 14 Team Interview

December 9 Project Kick-off Meeting with Trustees

January 16 Public Stakeholder Meetings

- Pickleball
- Park Board
- Tennis
- Field Sports, Bath Art Festival
- Open Public Meeting

February 10 Work Session with Township Trustees

March 17 Draft Master Plan

April 22 Site Walk to review Draft Master Plan with Township Trustees

May 15 Master Plan Presentation to Park Board and Public Attendees

Build on Existing Knowledge

Establish the Starting Point.

Evaluate current planning efforts (e.g. the Comprehensive Plan), existing documentation, and actual site conditions.

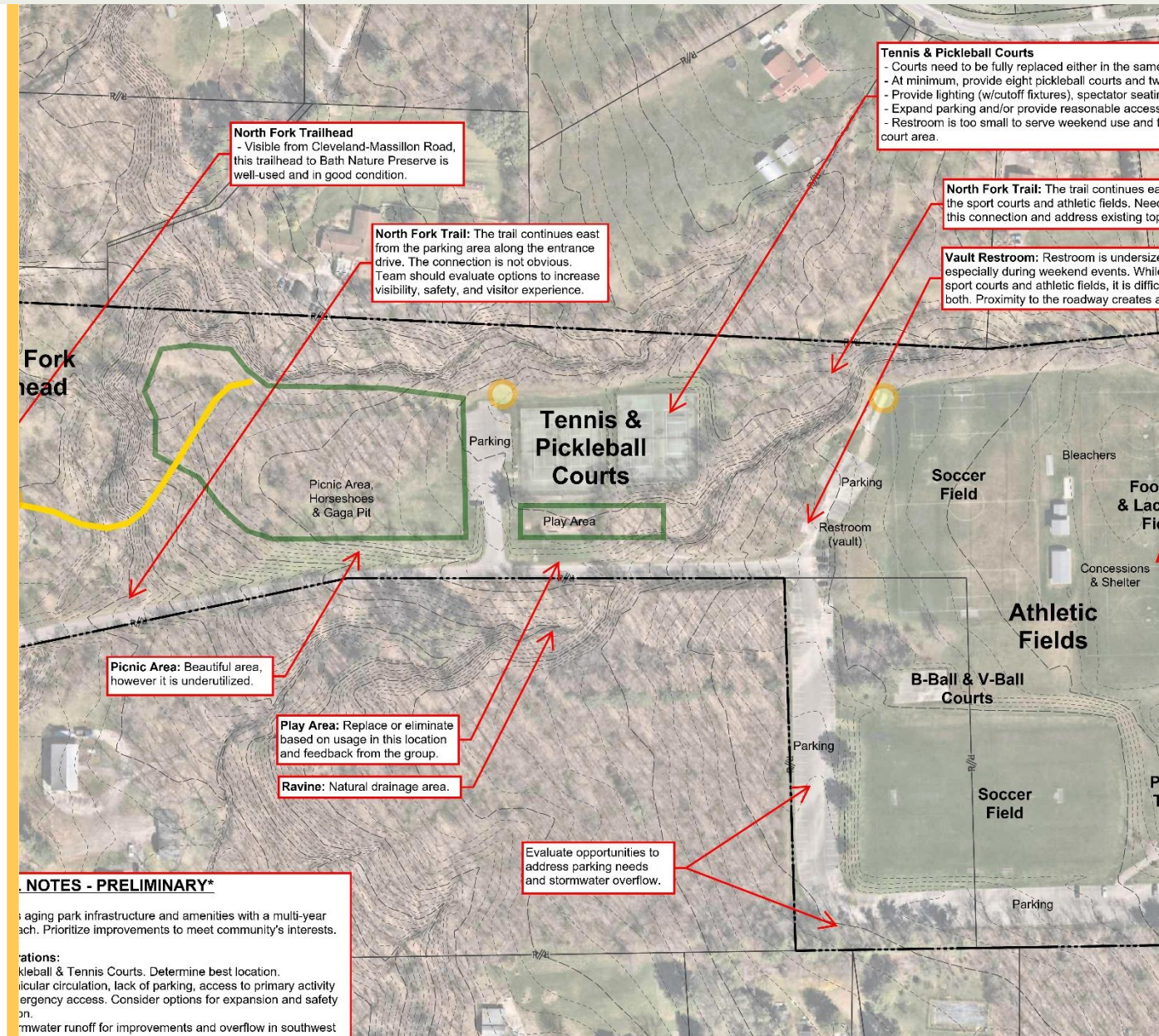
“Keep Bath Township Rural”



Document and Explore Limits

Create the baseline.

Verify the existing opportunities, constraints, and potential areas of improvement – and develop a common language to provide a foundation for the Master Plan.



Key Considerations

- Pickleball & Tennis Courts Replacement & Location
- Basketball Court
- Vehicular Circulation & Parking, Safety
- Trail Connectivity
- Restrooms w/Flush Toilets
- Stormwater Drainage
- Play Areas
- ADA Access
- Operations & Maintenance
- Potential Expansion
- **Community Experience**



Inspirational Images



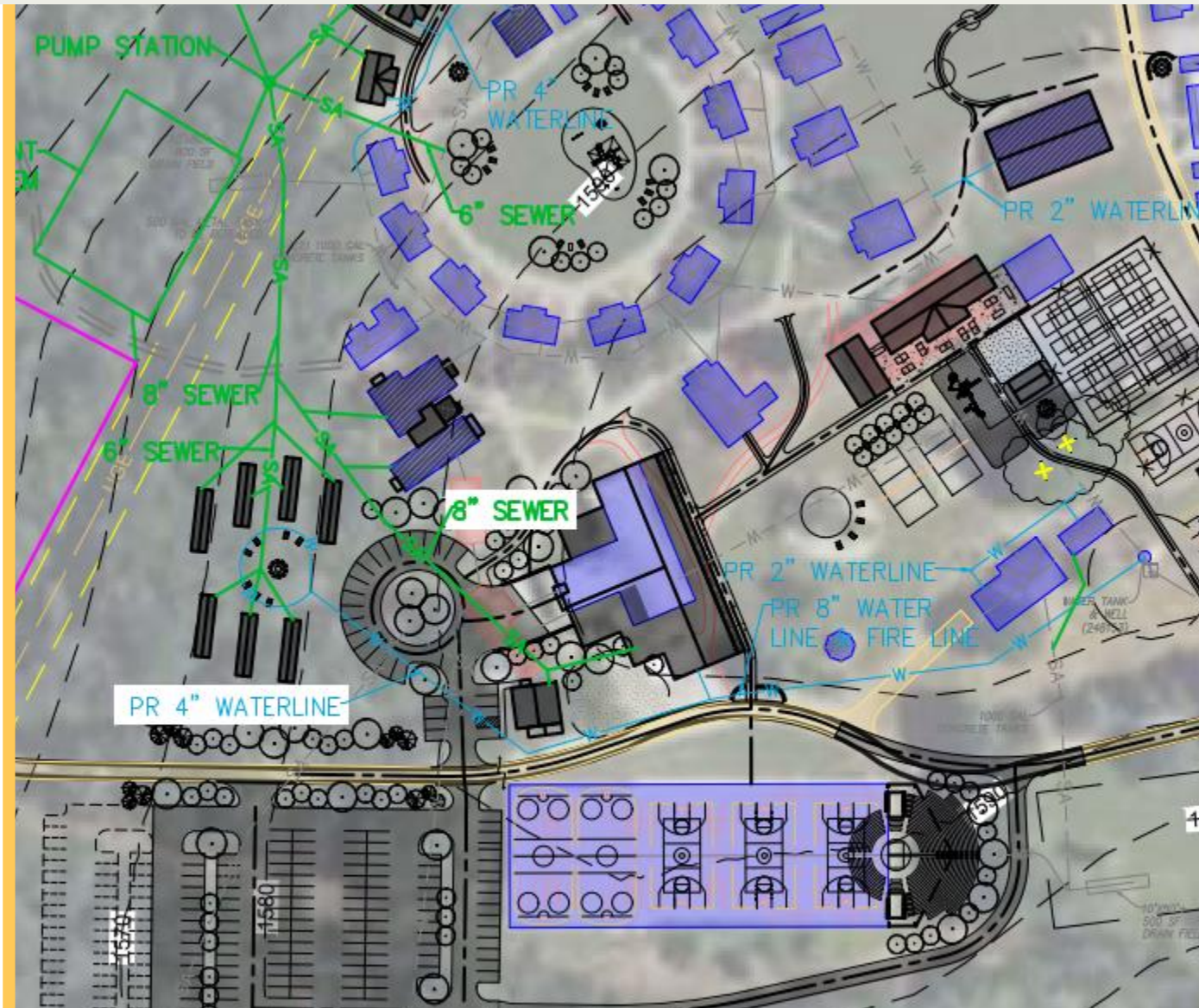
Inspirational Images



Look Underground

Site Utilities.

In collaboration with the project team, refine ideas and balance priorities to develop an aspirational, yet achievable plan.



NJY Camps - Camp Neshor Concepts

Existing Park Plan





SITE PLAN LEGEND

- P. PARKING
- bP. BUS PARKING
- 1. RESTROOM
- 2. SHELTER
- 3. TENNIS COURT (NEW)
- 4. PICKLEBALL COURT (NEW)
- 5. ATHLETIC FIELD (EXISTING)
- 6. SCORE BOARD (NEW)
- 7. AMPHITHEATER WITH REINFORCED TURF STAGE/DRIVE
- 8. SLEDDING HILL
- 9. BASKETBALL COURT (NEW)
- 10. PLAYGROUND EXPANDED (EXISTING)
 - 10a. ZIP LINE
 - 10b. DOME
 - 10c. SPINNER
 - 10d. TUBE
- 11. VOLLEYBALL (NEW)
- 12. GAGA PIT (RELOCATED)
- 13. CONCESSIONS (EXISTING)
- 14. TRAILHEAD SIGNAGE
- 15. STORMWATER MANAGEMENT
- 16. MAINTENANCE (EXISTING)

Park Master Plan

Entrance and Racquet Courts



SITE PLAN LEGEND

- P. PARKING
- bP. BUS PARKING
- 1. RESTROOM
- 2. SHELTER
- 3. TENNIS COURT (NEW)
- 4. PICKLEBALL COURT (NEW)
- 5. ATHLETIC FIELD (EXISTING)
- 6. SCORE BOARD (NEW)
- 7. AMPHITHEATER WITH REINFORCED TURF STAGE/DRIVE
- 8. SLEDDING HILL
- 9. BASKETBALL COURT (NEW)
- 10. PLAYGROUND EXPANDED (EXISTING)
- 10a. ZIP LINE
- 10b. DOME
- 10c. SPINNER
- 10d. TUBE
- 11. VOLLEYBALL (NEW)
- 12. GAGA PIT (RELOCATED)
- 13. CONCESSIONS (EXISTING)
- 14. TRAILHEAD SIGNAGE
- 15. STORMWATER MANAGEMENT
- 16. MAINTENANCE (EXISTING)

Central Park Area



SITE PLAN LEGEND

- P. PARKING
- bP. BUS PARKING
- 1. RESTROOM
- 2. SHELTER
- 3. TENNIS COURT (NEW)
- 4. PICKLEBALL COURT (NEW)
- 5. ATHLETIC FIELD (EXISTING)
- 6. SCORE BOARD (NEW)
- 7. AMPHITHEATER WITH REINFORCED TURF STAGE/DRIVE
- 8. SLEDDING HILL
- 9. BASKETBALL COURT (NEW)
- 10. PLAYGROUND EXPANDED (EXISTING)
 - 10a. ZIP LINE
 - 10b. DOME
 - 10c. SPINNER
 - 10d. TUBE
- 11. VOLLEYBALL (NEW)
- 12. GAGA PIT (RELOCATED)
- 13. CONCESSIONS (EXISTING)
- 14. TRAILHEAD SIGNAGE
- 15. STORMWATER MANAGEMENT
- 18. MAINTENANCE (EXISTING)



Thank you!

